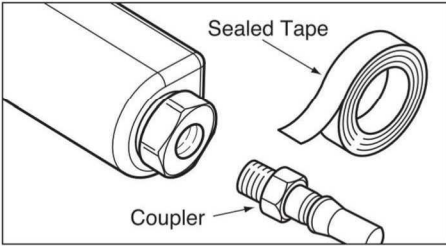
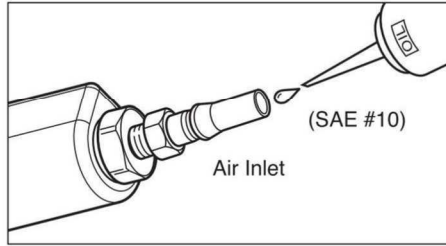


INSTRUCTION MANUAL U-725S MINI BEVELLER

1. Apply Sealed Tape onto the thread of Coupler to prevent air leak.

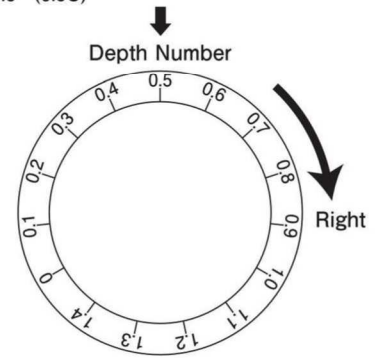


2. Apply Pneumatic Oil prior to starting operation.



3. Adjust the depth prior to operating tool.

※Prior to shipment the cutters are adjusted to "0.5" (0.5C)

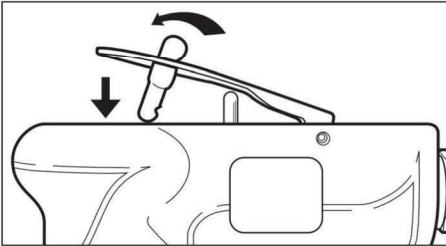


●Turning the adjustment to the left will decrease 0.1mm depth of the cut.

0.1C~1.4C → "0" = 1.5C

⚠ Test cut will be needed. Check the finish and chamfering amount prior starting operation.

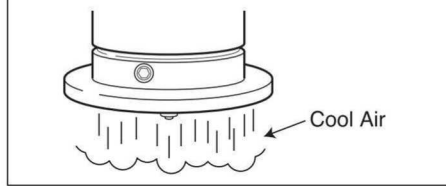
4. Press Safety lever.



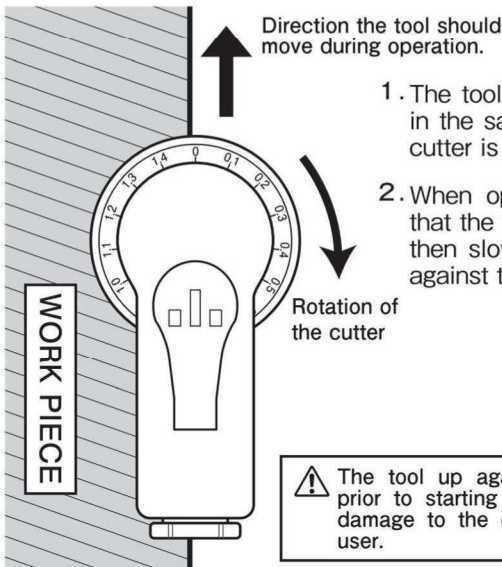
Cooling Air System

Cool air comes out for cooling the grinding surface.

⚠ Always wear eye protection.



HOW TO OPERATE



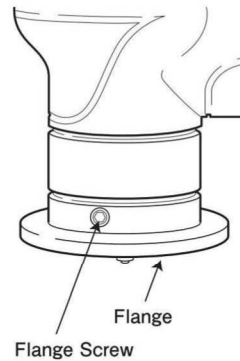
1. The tool should be operated in the same direction as the cutter is turning.
2. When operating, make sure that the tool is operating first then slowly hold it firmly up against the work piece.

⚠ The tool up against the work piece prior to starting operation will cause damage to the cutter and injuries to user.

HOW TO CHANGE/REPLACE THE CUTTING BLADE

● There are 3 surfaces available

⚠ Remove the Air hose from the tool when changing/replacing the cutting blade.



1. Unscrew Flange screw about halfway and take out adjusting ring.
2. Hold the tool upside down to see cutter holder.
3. Hold Cutter Holder. Use Flat Torx Wrench and remove screw to change blades.
4. Make sure to tighten the screw after blade change.

HOW TO CHANGE THE GUIDE ROLLER

Hold Cutter Holder by Flat Torx Wrench. Use 4mm Spanner Wrench to remove Hex nut then pull Guide Roller.

