



RATCHET WRENCHES - 1/4" 3/8" 1/2" Sq. Drive & Through

APPLICATIONS

Fasten/unfasten the screws of car engine and other automotive repairing and maintenance as well as various industrial operations at confined areas.

- **AK-1900** 3/8" (9.5mm) sq.drive
- **AK-1900A** 1/4" (6.35mm) sq.drive
Mini Ratchet



- **AK-1902** 3/8" (9.5mm) sq.drive
"U-GUIDE" Mini Ratchet



- **AK-1901** 3/8" (9.5mm) sq.drive
"U-GUIDE" Mini Ratchet



- **AK-131** 1/2" (12.7mm) sq.drive
- **AK-133** 3/8" (9.5mm) sq.drive
Standard Ratchet



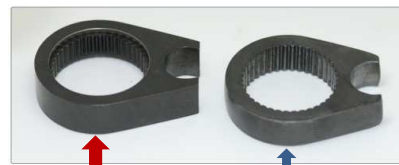
- **AK-220** Through Ratchet (S)



- **AK-225** Through Ratchet (L)



U-GUIDE device for AK-1901 & AK-1902



U-GUIDE York

Conventional

- +Solution to the structural problem of ratchet.
- +Special finish made on York teeth (US patent).
- +Minimum slippage of Anvil Shank and York.
- +Minimum wearing of York teeth and Anvil Shank.
- +Stability of torque and rotation.
- +Minimize the damages of screws.
- +Additional fastening by hand is available.

WORN anvil



NEW anvil

3-step SPEED REGULATOR for AK-1901

grooves speed

- 1 : Stop
- 2 : Low speed
- 3 : Midium speed
- 4 : High speed



- air exhaust direction is variable at 360 degrees.

Model	Sq./Hex. Drive (mm)	Drive Speed no load (rpm)	Torque (N·m)	Air Cons. (L/min)	Air Inlet (inch PT)	Net Weight (kg)	Length (mm)
AK-1900	9.5	250	20	350	1/4	0.5	165
AK-1900A	6.35	250	20	350	1/4	0.5	165
AK-1901	9.5	250	20	350	1/4	0.63	192
AK-1902	9.5	250	20	350	1/4	0.5	165
AK-133	9.5	160	80	450	1/4	1.16	263
AK-131	12.7	160	80	450	1/4	1.16	263
AK-220	8,10,12,14	450	30	350	1/4	0.58	210
AK-225	17,19,21	350	30	250	1/4	0.8	250